

FKD EC Series

Inline Mixed Flow Fans with EC-motors

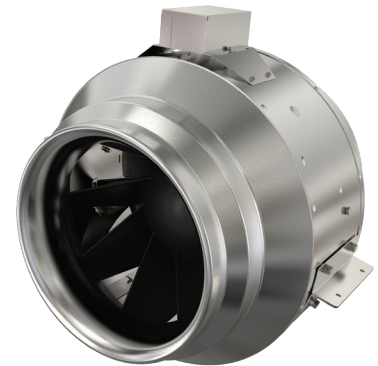
These fans are known for their economical use of energy and excellent ease of control. They can be varied in speed to match the airflow demand, and operate at high efficiency levels. An excellent choice for exhaust or supply applications where quieter performance and easy installation are important. Perfect for commercial and institutional structures such as offices, hospitals, beauty salons, veterinary clinics as well as residential applications such as kitchen range hood exhaust.

Design

The casing is manufactured from galvanized sheet metal. The FKD EC series have external rotor EC motors with a mixed flow impeller, which reduces the external dimensions of the fans. These fans have a high air flow capacity in relation to their compact design. Brackets are supplied with the fans to make installation easier.

Speed Control

The FKD EC fan motor's speed is controlled via a 0-10Vdc signal. The motor provides a +10V reference that can be used by a remotely-mounted potentiometer (such as MTP 10, see page 236). The motor can also be controlled by an externally-provided 0-10Vdc signal that can come from any device or a Building Management System (BMS). The fan's motor also provides operational speed (tachometer pulse) output that can be used to verify fan operation. These control features allow the FKD EC to be integrated into and play an active role in smart HVAC systems in buildings.

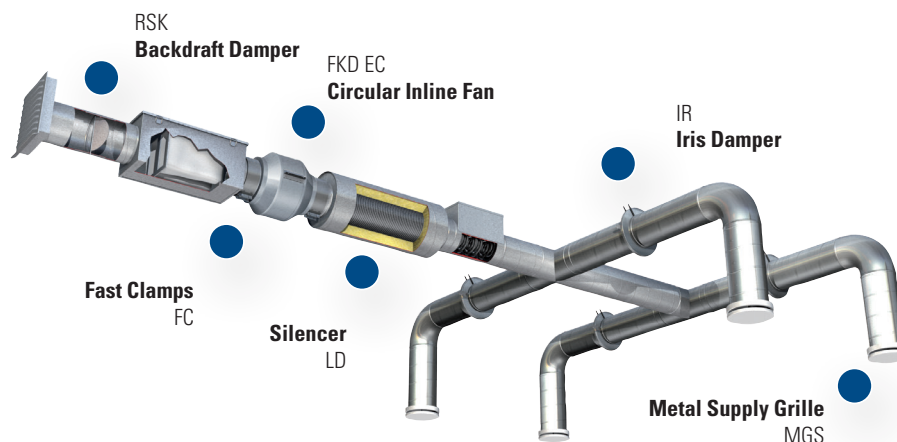


Fantech, Inc. certifies that the models shown herein are licensed to bear the AMCA Seal. The ratings are based on the tests and procedures performed in accordance with AMCA Publication 211 and Publication 311 if sound is also certified and comply with the requirements of the AMCA Certified Ratings Program.

Features and Benefits

- 1936 to 5967 CFM
- Mixed-flow impeller
- Suitable for airstream temperatures of up to 140° F (60° C)
- Pre-wired speed control potentiometer for air flow adjustments and balancing
- BMS compatible (EC models)

Applications



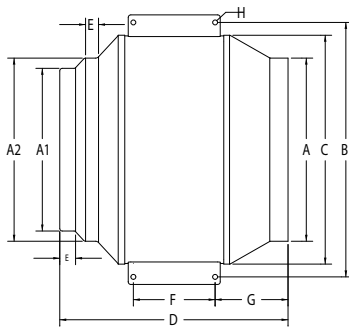
Specification Data

Model	Rated power	Voltage / phase	Max amps	RPM	0.0" P _s	0.25" P _s	0.50" P _s	0.75" P _s	1.0" P _s	1.25" P _s	Sones [†]	Shipping weight	
	W	V / ~	A	min ⁻¹	cfm							lbs	kg
FKD 12XL EC	395	120/1	2.09	1698	1936	1777	1601	1380	971	532	16	46	21
FKD 14XL EC	450	120/1	2.43	1424	2430	2223	1988	1681	1141	575	13	56	25
FKD 16 EC	1082	230/1	4.30	1535	4250	4000	3667	3271	2688	1875	18	75	34
FKD 16XL EC	1965	460/3	2.52	1909	5150	4955	4744	4500	4243	3897	26	75	34
FKD 18 EC	1979	460/3	2.48	1612	5921	5729	5460	5185	4869	4564	25	98	44
FKD 20 EC	2002	460/3	2.30	1597	5967	5700	5467	5267	4967	4633	26	99	45

Performance certified is for installation type D-Ducted inlet, Ducted outlet.. Speed (RPM) shown is nominal. Performance is based on actual speed of test. Performance ratings do not include the effects of appurtenances (accessories).

†The sound ratings shown are loudness values in hemispherical sones at 1.5 m (5ft) in hemispherical free field calculated per AMCA Standard 301. Values shown are for installation Type D: Ducted inlet hemispherical sone levels. Ratings do not include the effect of duct end correction. All sone values shown are calculated at 0.5" (static pressure in inches W.G.).

Dimensions



Model	A	A1	A2	B	C	D	E	F	G	H
FKD 12XL EC	12 (305)	12 (305)	14 (356)	20 5/8 (524)	17 7/8 (454)	18 7/8 (479)	1 1/8 (29)	4 (102)	8 1/2 (216)	3/8 (10)
FKD 14XL EC	14 (356)	14 (356)	16 (406)	22 3/8 (568)	19 3/4 (502)	20 3/8 (518)	1 1/4 (32)	4 (102)	8 5/8 (219)	3/8 (10)
FKD 16 EC	15 5/8 (397)	15 5/8 (397)	17 5/8 (448)	24 1/2 (622)	22 (559)	23 5/8 (600)	1 1/4 (32)	7 7/8 (200)	8 3/4 (222)	1/2 (13)
FKD 16XL EC	15 5/8 (397)	15 5/8 (397)	17 5/8 (448)	24 1/2 (622)	22 (559)	23 5/8 (600)	1 1/4 (32)	7 7/8 (200)	8 3/4 (222)	1/2 (13)
FKD 18 EC	17 5/8 (448)	17 5/8 (448)	19 5/8 (498)	28 1/2 (724)	26 (660)	27 1/8 (689)	1 3/4 (44)	7 7/8 (200)	10 1/2 (267)	1/2 (13)
FKD 20 EC	19 5/8 (498)	17 5/8 (448)	19 5/8 (498)	28 1/2 (724)	26 (660)	27 7/8 (708)	1 3/4 (44)	7 7/8 (200)	11 1/4 (286)	1/2 (13)

All dimensions in inches (mm).

Accessories



ADC
Shut off Damper



RSK
Backdraft Damper



FGR
Filter Cassette



FC
Mounting Clamps



LD
Silencer



IR
Iris Damper



FML
Intake Hood



MTP 10
Speed Control



DPC 200
Constant Pressure Control



5ACC..MS
Motor Disconnect

Customer Support: 🇨🇦 🇩🇪

Canada 800.565.3548 • CANADAsupport@fantech.net • www.fantech.net

Fantech reserves the right to modify, at any time and without notice, any or all of its products' features, designs, components and specifications to maintain their technological leadership position.



fantech®
a systemair company